



# GMT MONTHLY MEMBERSHIP PROGRESS REPORT

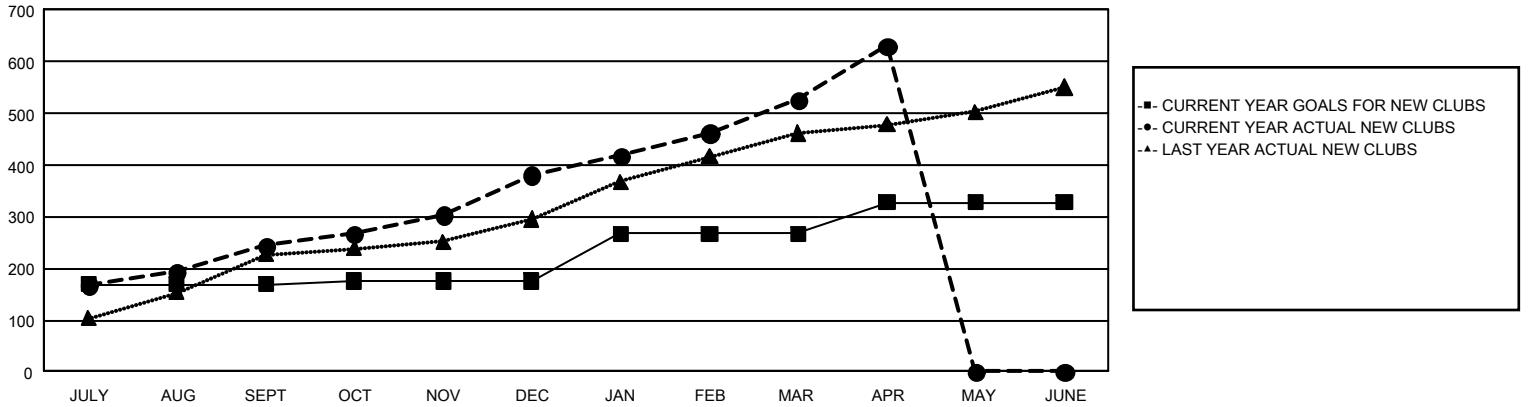
## GAT Constitutional Area 6 - South Asia and Middle East

Results as of: 4/30/2026

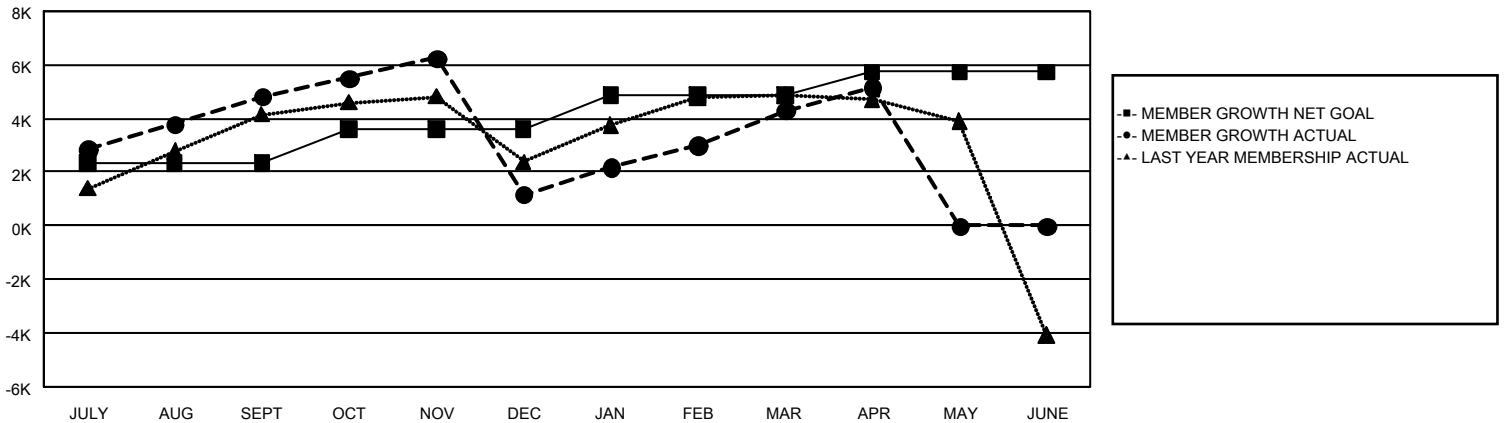
REPORT DOES NOT INCLUDE CLUBS IN UNDISTRICTED AREAS.

Clubs				Members			
RESULTS FOR 2025-2026				RESULTS FOR 2025-2026			
QUARTER	NEW CLUB GOAL	NEW CLUBS	DROPPED CLUBS	QUARTER	MEMBER GROWTH NET GOAL	MEMBER GROWTH ACTUAL	DROPPED MEMBERS ACTUAL (including transfers)
JULY/AUG/SEPT	169	244	50	JULY/AUG/SEPT	2,348	10,383	4,579
OCT/NOV/DEC	7	137	197	OCT/NOV/DEC	1,262	6,611	9,407
JAN/FEB/MAR	91	145	29	JAN/FEB/MAR	1,262	6,252	1,732
APR/MAY/JUNE	60	104	55	APR/MAY/JUNE	873	3,156	2,040

**GOALS AND ACTUAL NEW CLUBS CUMULATIVE**



**GOALS AND ACTUAL MEMBERS CUMULATIVE**



DROPPED CLUBS: 331	2,486 CLUBS OF 4,732 ADDED 1 OR MORE NEW MEMBERS	<b>GENDER DISTRIBUTION</b>
<b>DROPPED MEMBERS</b>		MALE                    68,805 (71.41%)
DECEASED                    77		FEMALE                27,489 (28.53%)
CLUB CANCELLED            6,451	<a href="#">CLICK HERE FOR CUMULATIVE MEMBERSHIP DATA</a>	TOTAL FAMILY UNIT MEMBERS                    46,926
OTHER                            11,149		FAMILY MEMBERS PAYING HALF DUES                    32,347
<b>TOTAL                            17,677</b>		